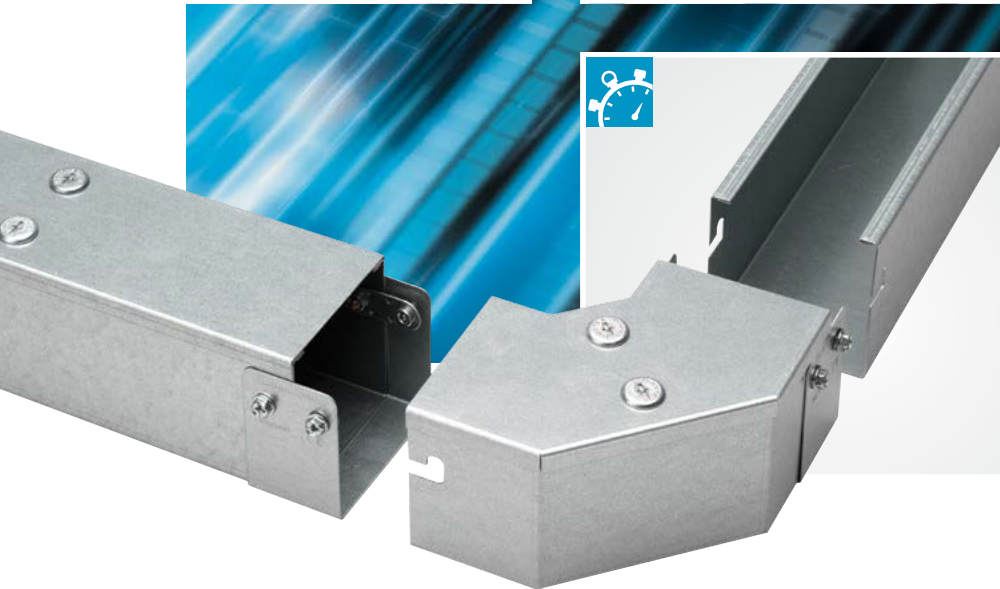
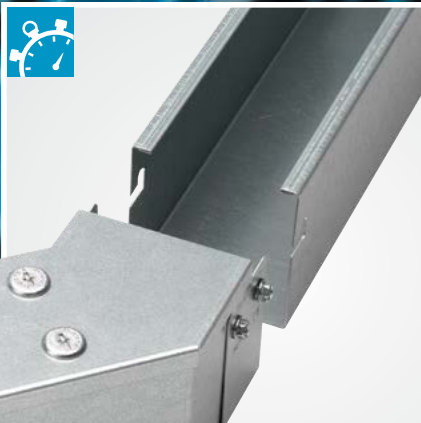
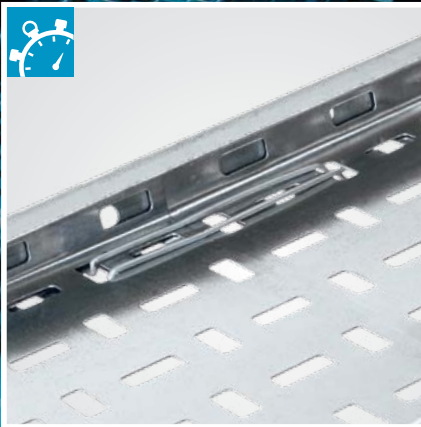
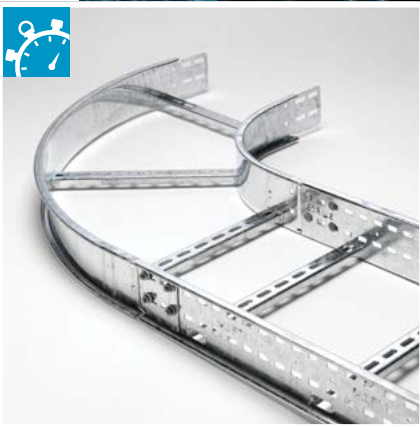




FASTER

b y d e s i g n

CABLE MANAGEMENT PRODUCT RANGE



GLOBAL STRENGTH BUILT ON LOCAL KNOWLEDGE.



3,900 ACTIVE PATENTS.
4.5% OF SALES INVESTED IN R&D.

Investing in innovation

Legrand is the global specialist in electrical and digital building infrastructures. Innovation is one of the key driving forces behind the company's growth and success. With an increasing investment in research and development (4.5% of sales) and around 4,000 active patents, the Legrand Group focuses on maintaining a high rate of new product launches that present innovative solutions to the market.

The Legrand Group takes its environmental responsibility seriously. Following an 'eco-design' strategy means that products are designed to ensure that they have a minimum environmental impact throughout their life cycle.

75% OF
PRODUCTS
SOLD IN THE
UK ARE MADE
IN THE UK.



UK manufacturing

In the UK we manufacture approximately 75% of everything we sell, which means we have local expertise in research and development, design, production and technical support.

Swifts cable ladder and tray, two of our most recognised names in cable management, have been designed and manufactured at our Scarborough site since the 1960s. The site has its own in-house galvanising facility which gives us complete control over the quality of the final product and provides you with peace of mind that your installation will stand the test of time.

Our in-house design team offers a bespoke product service ('specials') which provides unique solutions to the most challenging of projects.

UK manufactured ranges include:

- Salamandre distribution trunking
- Swifts cable tray
- Swifts cable ladder
- Powertrack and floor boxes



Three simple steps to better cable management...

We continually look for ways to improve our product ranges. In the case of cable management, every improvement we make has the installer in mind and is based around the three areas that make up our 'Faster by Design' ethos:

1

EASIER TO INSTALL

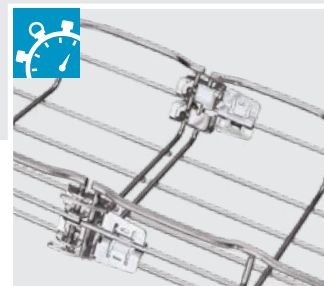
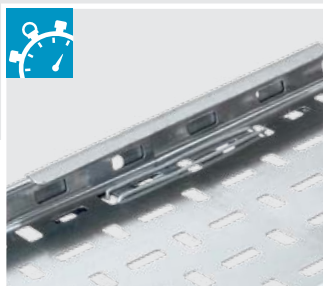
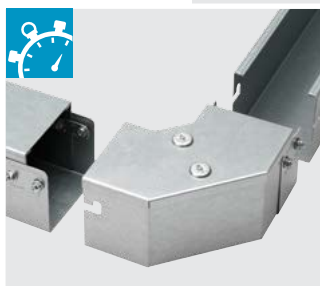
2

FASTER TO INSTALL

3

FEWER COMPONENTS

Our products are not only faster to install, they're also easier to handle and require less time on site to fit - reducing the total installed cost of your project.



Supporting you and your project

With in-depth knowledge and experience, our expert cable management team provides you with the support and advice you need for your installation. We also offer a range of free CPD seminars and a wealth of resources are available on our website to help you with your project.

You will find the following helpful items on our website, www.legrand.co.uk:

- BIM files and Product Data Sheets (PDSs)
- CPD accredited seminars
- Product technical guides
- PEPs (Product Environmental Profiles)
- 'How to' videos and CGIs demonstrating our product ranges



FIND OUT MORE...
www.legrand.co.uk

MORE INNOVATIONS. MORE WAYS TO ENSURE FASTER FITTING.

TURNBUCKLE

Push fit, quarter-turn release.

CLIP-ON LID

Spring-loaded turnbuckles for fast, secure fitting and easy maintenance.

UNIQUE COUPLING SYSTEM

Couplers are pre-fitted to one end of each Salamandre length for immediate time savings.

SAFETY EDGE

A new smooth curved return for safer handling and minimised cable damage.

MULTI-HEAD SCREWS

Hex, cross and slot means installers always have the right screwdriver to hand.

SHAKE-PROOF SCREWS

No dropping, delays or fiddly handling when working over head.

CONVENIENT SLOTTED ENDS

Rapid location and fixing.

FIT FASTER. FIT SALAMANDRE.®

50% FASTER
TO FIT. DON'T
JUST TAKE
OUR WORD
FOR IT!



The best got even better...

Salamandre distribution trunking sets the standard for fitting speed. With its unique pre-fitted coupling system, integrated shake-proof screws and clip-on lid, fitting times can be 50% quicker than any alternative - at least. Together with a smooth safety edge for easier handling, the extensive Salamandre range is the ideal fit for anyone focused on reducing installation times.

Save time, save money

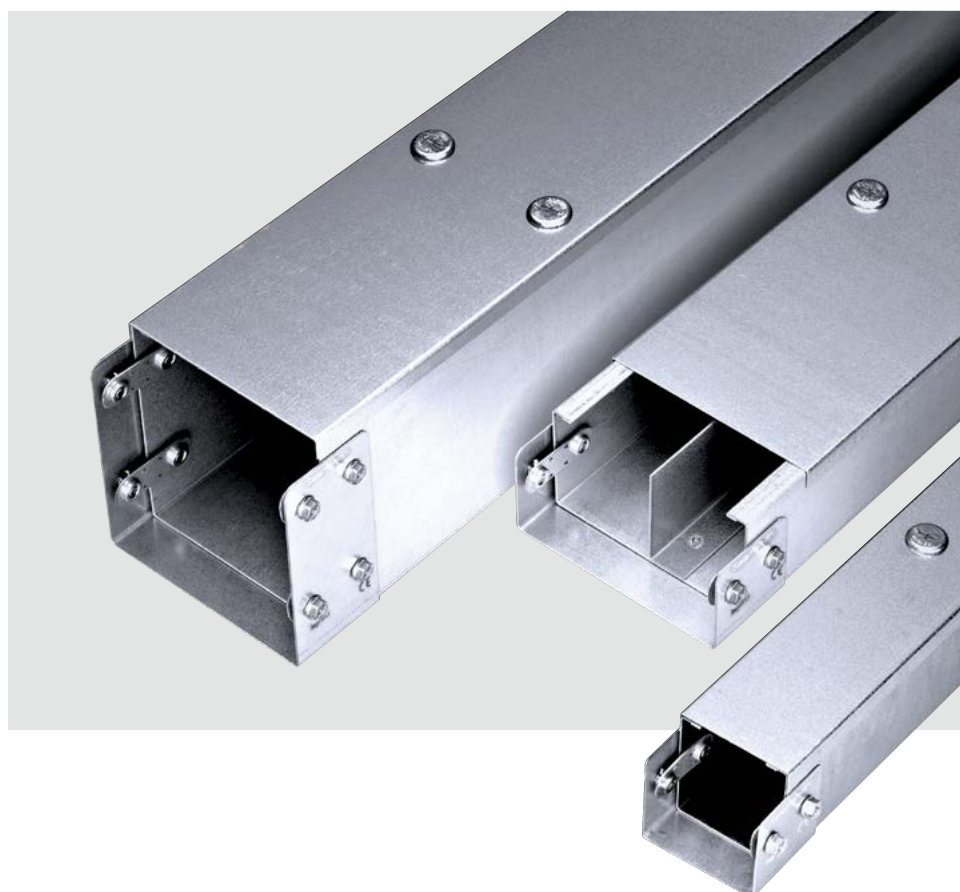
The innovative design of Salamandre has led not only to time savings for installers and contractors, but also to a significantly reduced total installed cost by saving time on site, and therefore money on labour.

Independent tests by
BSRIA confirm that
Salamandre is at least
50% faster to fit*

Luckins, author of the Electrical Installation Times Guide has recognised that Salamandre is significantly different from other trunking available in the current market and has therefore reflected the time-saving results that were achieved during the testing in their electronic database.



* When fitting length to length or length to fitting.
Full report available on request from Legrand.



For IP4X protection, simply clip a 'cover strap' to each coupler over the joint between two lids.



A SIMPLE,
CONVENIENT
SOLUTION TO
MEETING THE
WIRING
REGULATIONS.

The latest innovations keep you up to speed with the regulations...

When BS 7671 : 2008 – Amendment No. 1 : 2011 came into force on January 1st 2012, it (and subsequent amendments 2 and 3) included specific instructions relating to the requirement for IP conformity of all trunking systems when using non-sheathed cables.

To achieve IP4X conformity using Salamandre requires the addition of a simple 'cover strap' which is connected to each coupler over the joint between two lids. A range of IP4X fittings, including bends, tees and crosspieces, provides a total solution when using non-sheathed cables.

IP4X fittings should be specified to achieve the correct level of conformity.



A reminder: The Wiring Regulations – 17th Edition (BS 7671 : 2008)

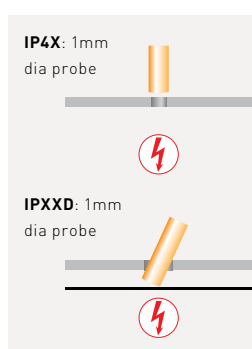
Section 521.10.1 of the Wiring Regulations includes the following

paragraph: "Non-sheathed cables are permitted if the cable trunking system provides at least the degree of protection IPXXD or IP4X, and if the cover can only be removed by means of a tool or deliberate action."*

The index of protection is defined in BS EN 60529 - Degree of protection of enclosures of electrical equipment.

As quoted in Section 521.10.1, the Regulations allow two levels for the degree of protection:

* Permission to reproduce extracts from BS 7671:2008+A1:2011 is granted by the British Standards Institution (BSI) and the Institute of Engineering and Technology (IET). No other use of this material is permitted.
BS 7671:2008 can be purchased in hardcopy format only from the IET website: <http://electrical.theiet.org/> and the BSI online shop: <http://shop.bsigroup.com>

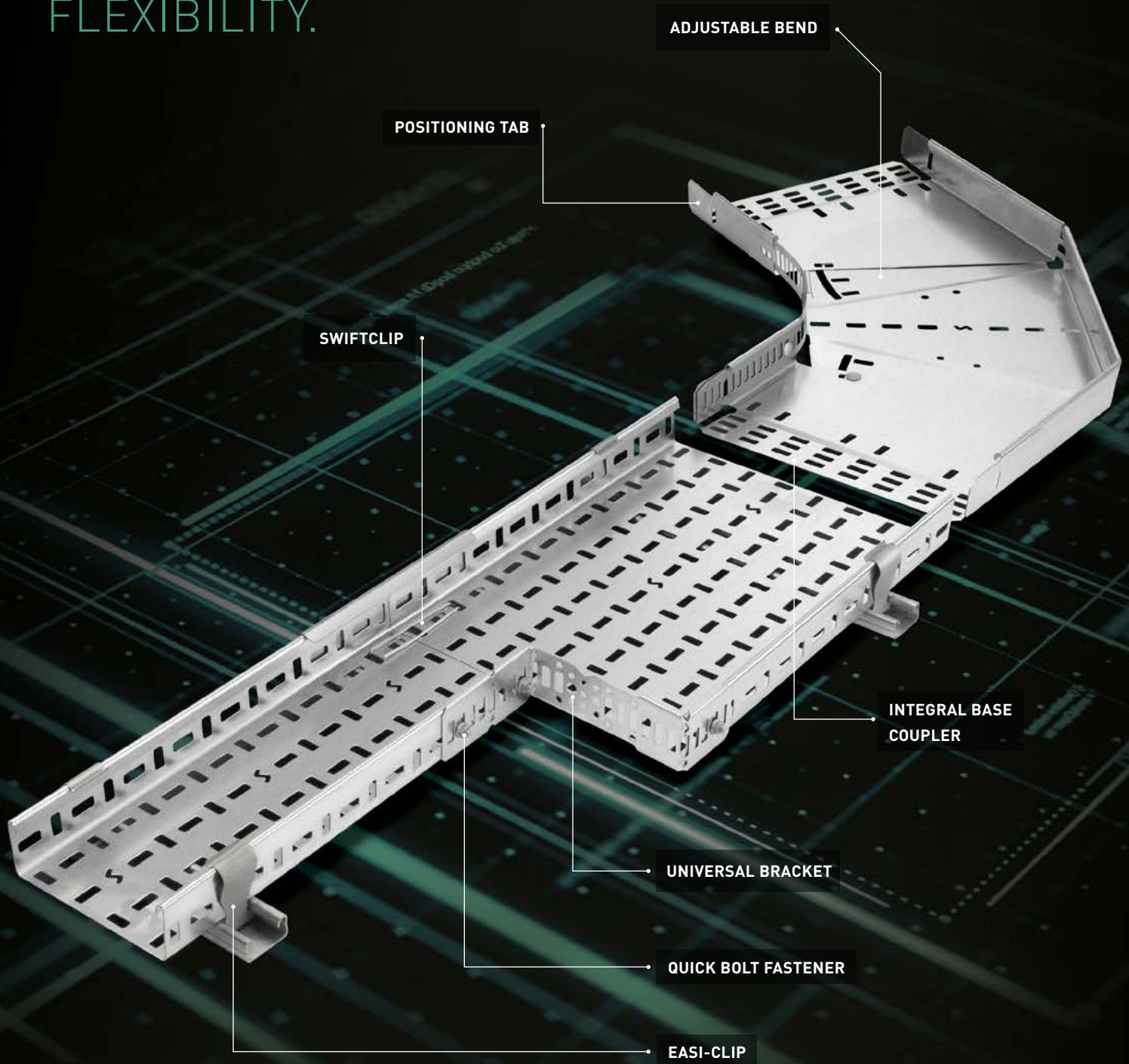


IP4X - Protected against solid bodies greater than 1mm in diameter. The test uses a 1mm diameter, 100mm long test probe / wire. The probe is applied with a force of 1N+10% and is not allowed to enter the enclosure being tested.

IPXXD - Solid bodies no greater than 1mm in diameter may enter the top of the enclosure but will remain clear of hazardous parts. The test uses a 1mm

diameter, 100mm long test probe / wire. The top of the enclosure may allow entry of the 100mm long test wire, however the wire is not allowed to touch any hazardous parts within the enclosure.

THE DISTINCTIVE SLOT PATTERN PROVIDES TOTAL FLEXIBILITY.



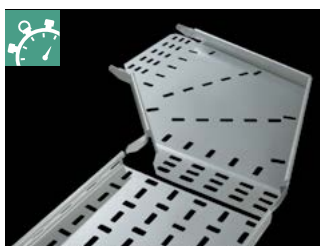
SWIFTS® CABLE TRAY

THE QUICK FIT CHOICE.

INNOVATIVE
FEATURES
THAT LOWER
INSTALLATION
COSTS.

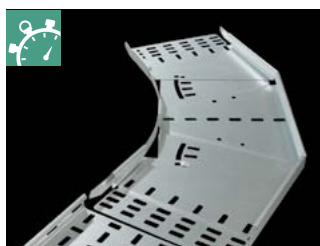
Swifts cable tray is a complete system with a range of fast-fit features.

From an integral coupler system on all fittings to unique adjustable bends and risers, as well as the new Swiftclip (page 8-9) and universal bracket (page 10-11), everything is designed to provide a strong, long-lasting solution while saving you money as well as time.



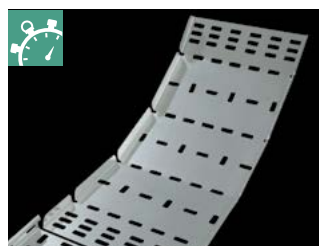
FLAT BENDS

Available in 30°, 45°, 60° & 90°. Integral base couplers and side lugs hold the fitting in place for easy assembly.



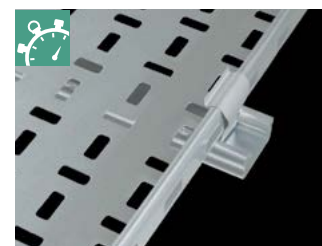
ADJUSTABLE FLAT BENDS

Adjustable from 30° to 90° with predetermined fixing locations at 7.5° increments.



ADJUSTABLE RISERS

Slide inside the cable tray length and adjust to almost any length or angle up to 90°.



EASI-CLIP

For a simple straightforward connection, use Easi-clip for fast connection of MRF and SRF tray to channel.

PRODUCT RANGES

SS - LIGHT DUTY

Tray depth:

12 mm
(for 50 - 225 mm widths)
18 mm (for 300 mm width)

Finishes:

G (hot dip galvanised)
PG (pre-galvanised)
S (stainless steel)

MRF - MEDIUM DUTY

Tray depth:

25 mm

Finishes:

G (hot dip galvanised)
D (deep galvanised)
PG (pre-galvanised)
S (stainless steel)
E (powder coated)

SRF - HEAVY DUTY

Tray depth:

50 mm

Finishes:

G (hot dip galvanised)
D (deep galvanised)
PG (pre-galvanised)
S (stainless steel)
E (powder coated)

XRF - EXTRA HEAVY DUTY

Tray depth:

80 mm

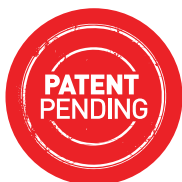
Finishes:

G (hot dip galvanised)
D (deep galvanised)
S (stainless steel)

SWIFTS[®] CABLE TRAY JUST GOT FASTER WITH SWIFTCLIP.

Swiftclip
connects
length to length
and length
to fitting.

The latest
innovation
in the Swifts
cable tray
range makes it
even quicker
& easier
to install.



Introducing Swiftclip: the new, fast-fit alternative to conventional nuts & bolts that seamlessly connects lengths and fittings, making light work of any installation.



Ready...

Locate coupler across the underside of tray joint.



Set...

Insert joggled head of the Swiftclip through both tray and coupler slots.



Go...

Pass each Swiftclip leg through the tray and coupler and you're done.



SWIFTCLIP BENEFITS



4 times faster to fit

Independent tests by BSRIA confirm that Swiftclip is at least four times faster to fit than standard nuts and bolts*. With just two clips per joint, it not only saves on the number of components needed, but also saves on time, meaning a reduced total installed cost.



No tools needed

With the new Swiftclip, lengths and fittings of Swifts cable tray can be fitted without the use of specialist tools – making it even faster, safer and easier to fit.



Stronger, faster, fitter

Swiftclip isn't just built for speed. It also offers uncompromised strength that meets the requirements of British Standards.



Cuts total installed cost

Packed with fast-fit features, the savings in time and effort of installing Swifts, as well as its durable design reducing the need for maintenance, vastly cut the total installed cost of the system.



Compatible with MRF and SRF ranges

Designed to integrate with the existing Swifts cable tray system, Swiftclip can be used with medium (MRF) and heavy duty (SRF) in 50 to 300mm widths. The entire system offers excellent earth continuity without the use of additional components.



Galvanised options

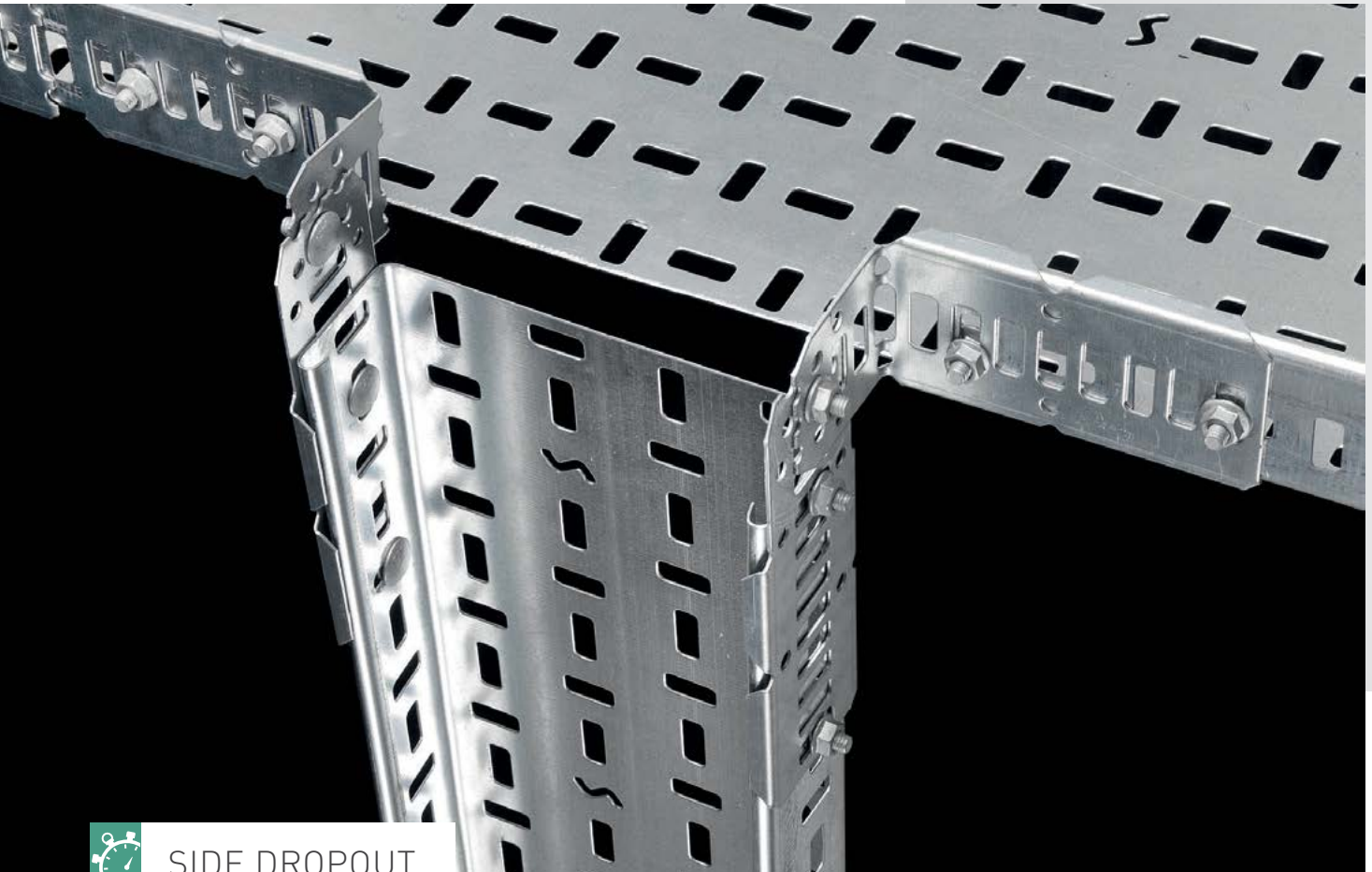
Available to suit external and internal applications, Swiftclip ensures your Swifts installation will stand the test of time.

*When connecting length to length or length to fitting.
Full report available on request from Legrand.

ONE INNOVATIVE BRACKET... ENDLESS CONFIGURATIONS.

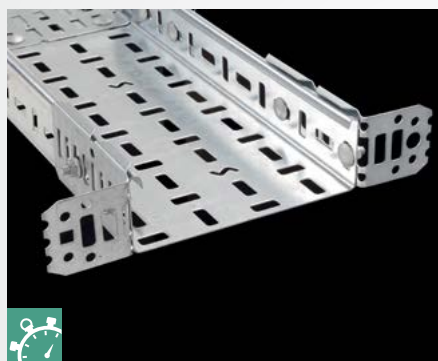
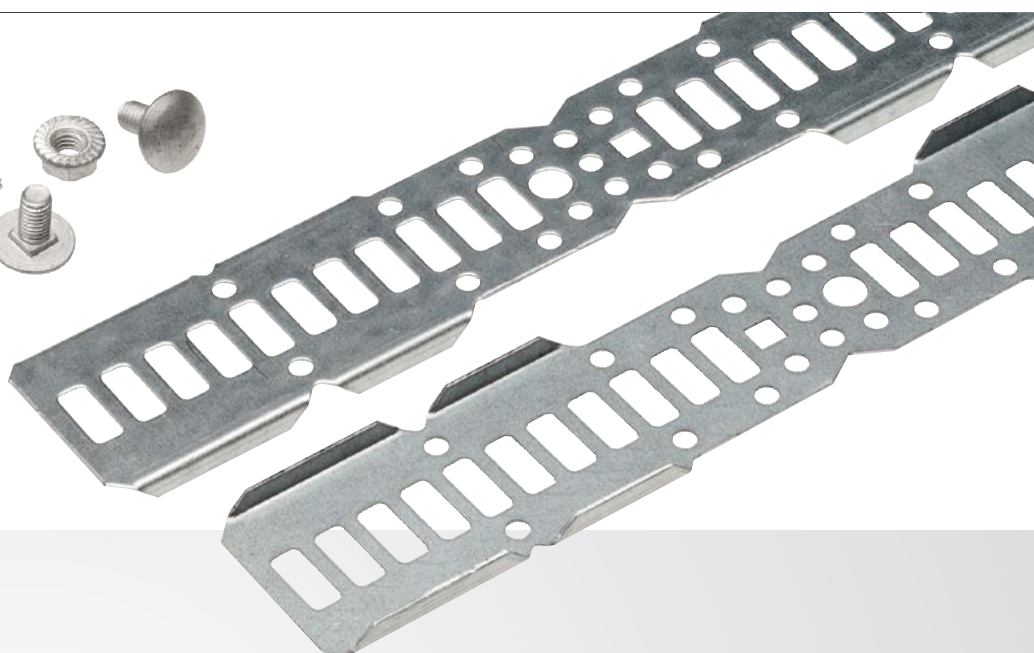
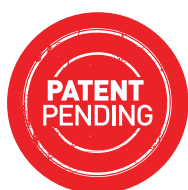
The universal bracket can be hand folded, bent, split or hinged to offer a multitude of functions. The unique design provides the flexibility to cope with demanding on-site requirements.

Supplied with 'quick bolt fasteners' and driver tool.
Use in conjunction with the universal fishplate to
add additional support and cable protection.



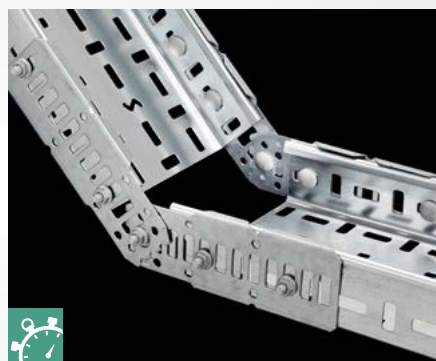
SIDE DROPOUT

Create specialist functions
such as side dropouts by
folding and hinging brackets.



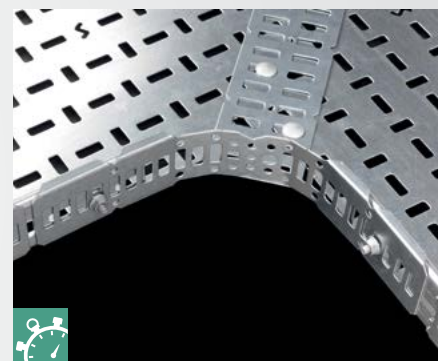
FLANGE ASSEMBLY

Snap and fold bracket to create a flange.



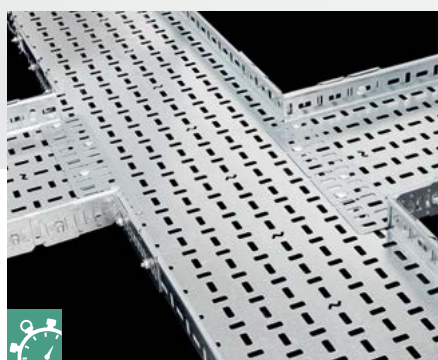
INTERNAL RISER

Snap and hinge bracket to create internal or external risers from -90 to $+90$ degrees.



FLAT BEND

Fold or bend bracket to desired angle.
For wider installations add a fishplate for additional support.



OFFSET FOURWAY

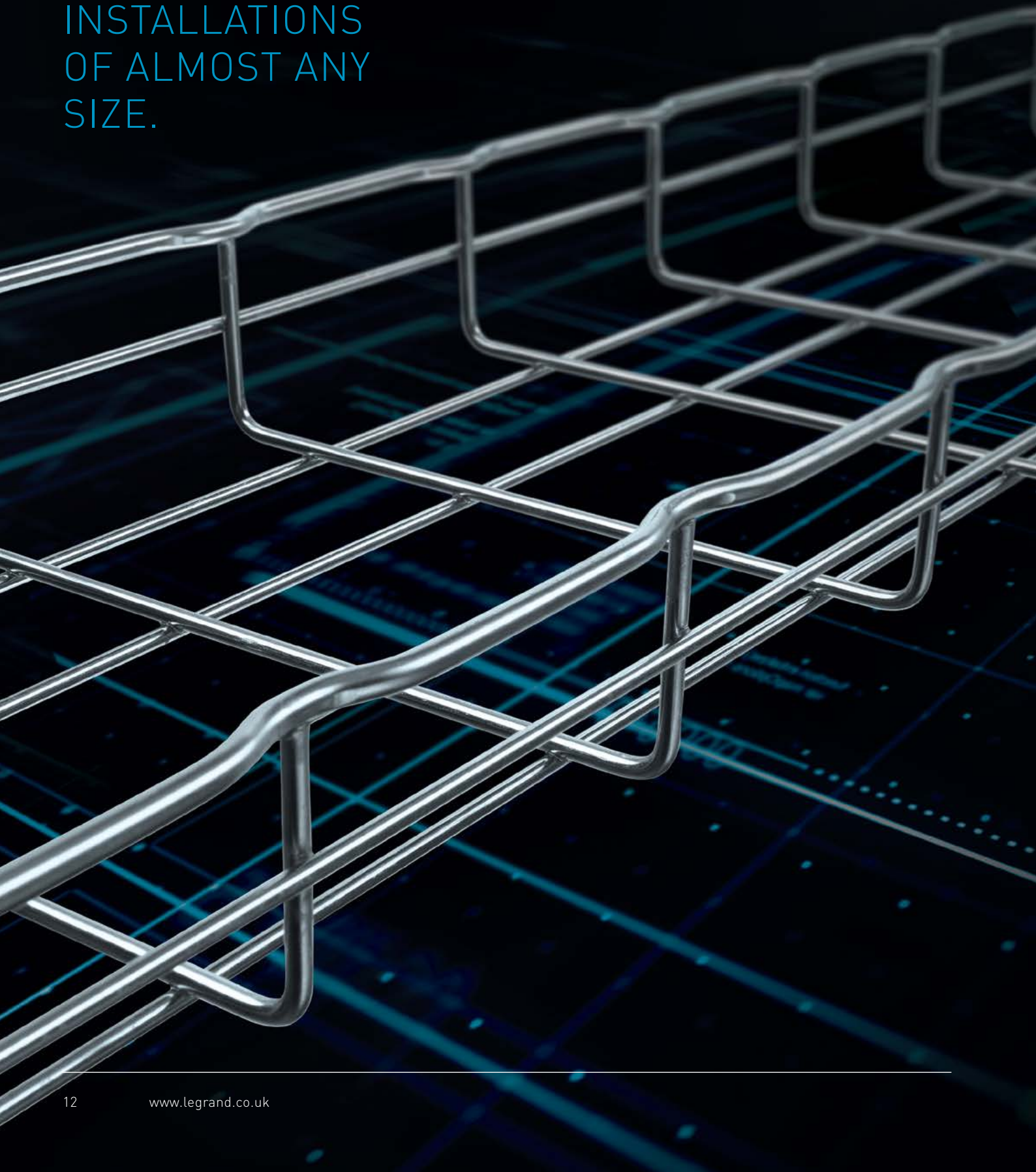
Fold or bend 2 pairs of brackets to form specialist offset fourways.



HANDED REDUCER

Create left, right or straight reducers by simply bending the bracket to suit the application.

A ROBUST, VERSATILE
CABLE MANAGEMENT
SOLUTION FOR
INSTALLATIONS
OF ALMOST ANY
SIZE.



CABLOFIL

THE LEADER IN STEEL WIRE CABLE TRAY.

DESIGNED TO
BE EASY TO
INSTALL &
CONFIGURE
ON SITE.

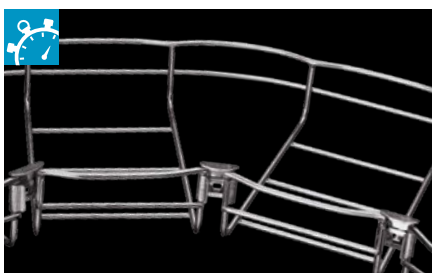
Choose Cablofil for fast,
simple, reliable installations.

Cablofil steel wire cable tray is supplied in straight lengths from which sophisticated installations can be created without the need for additional fittings. Simply cut and shape lengths to form bends, tees, crosspieces etc. and secure quickly and easily using a range of 'slot and tab' fixings that do not require nuts and bolts.



FASCLIC AUTO

This range of 54 mm deep steel wire cable tray is supplied complete with pre-fitted couplers for quick and easy connection of straight lengths. Lengths simply clip together without the need for additional fasteners.



FASLOCK AUTO

The simple answer to fabricating fittings on site. Create radius bends and reducers in minutes with Faslock Auto. No additional fasteners (or fuss) required.



FASTRUT 41

A push-fit clip designed to secure steel wire cable tray to channel support or channel type cantilever arms.

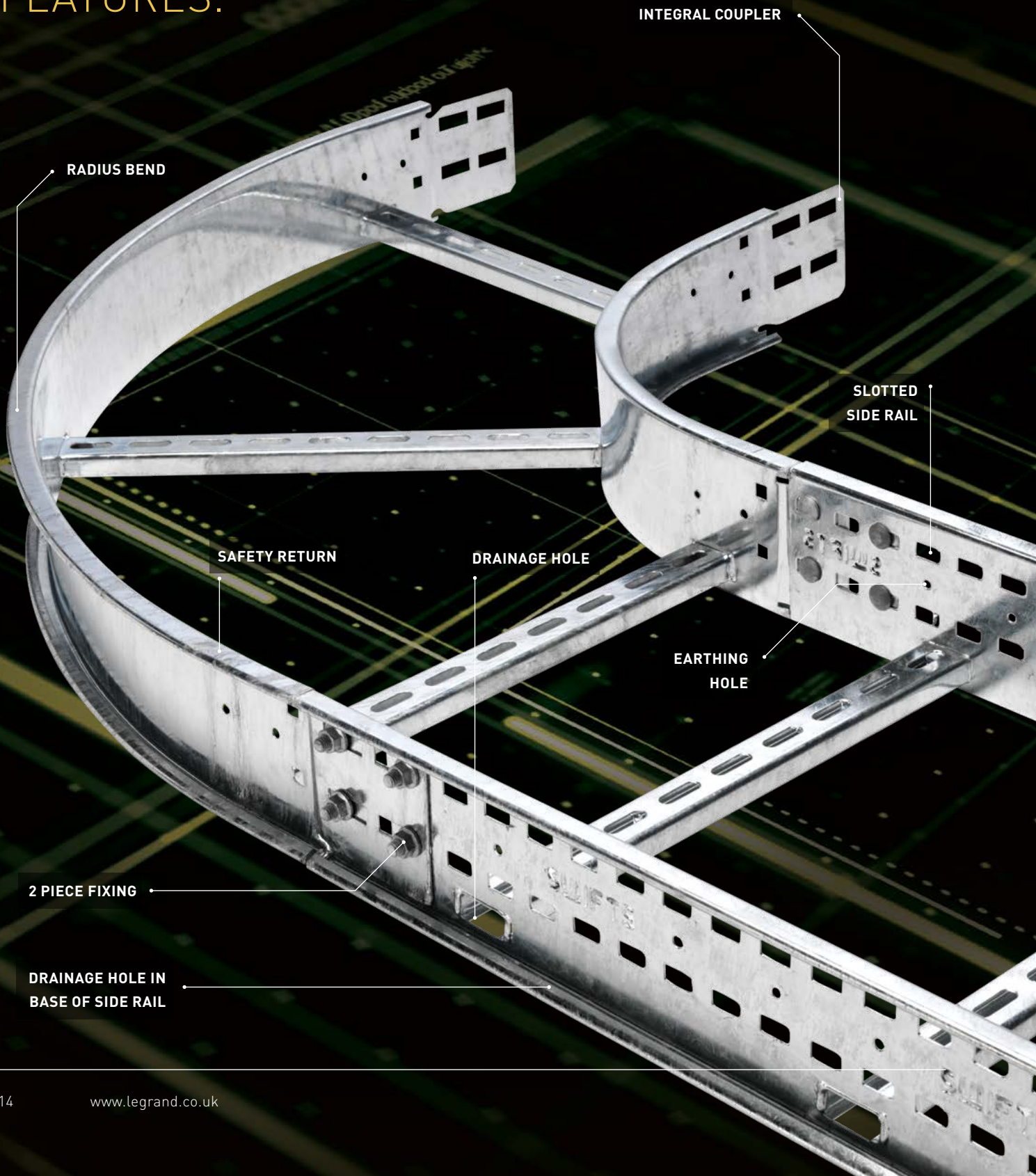
FIND OUT
MORE...
www.legrand.co.uk



PRODUCT RANGE FEATURES

- Vast range of supports for wall, ceiling and floor mounting
- Save on installation time with Cablofil's fast fix brackets and fixing kits
- Eradicate the need for nuts and bolts with Cablofil's 'slot & tab' boltless system
- Straight lengths available with pre-fitted couplers for rapid connection
- Natural ventilation provides greater cable efficiency
- Available in several finishes to suit different installation requirements

A WEALTH OF INNOVATIVE TIME-SAVING INSTALLATION FEATURES.



INTEGRAL COUPLER

RADIUS BEND

SLOTTED
SIDE RAIL

SAFETY RETURN

DRAINAGE HOLE

EARTHING
HOLE

2 PIECE FIXING

DRAINAGE HOLE IN
BASE OF SIDE RAIL

SWIFTS[®] CABLE LADDER FASTER BY DESIGN.

TIME-SAVING
FEATURES PUT
SWIFTS CABLE
LADDER AHEAD.

A comprehensive, market leading cable ladder system.

An established favourite in the UK and abroad, this comprehensive system of slotted rail cable ladder enables the coupling of lengths and fittings without the need for drilling. With fewer components and a wealth of innovative time-saving installation features, Swifts cable ladder remains the market leader.



FEWER COMPONENTS

The inclusion of integral couplers on all ladder fittings used together with quick-fit fasteners more than halves the number of required fixings and dramatically cuts installation time and cost. Supplied as standard on fittings, this coupling technique benefits every installation type, from medium duty right through to extra heavy duty.

PRODUCT RANGES

TOPAZ - MEDIUM DUTY

- Generally suitable for spans up to 3 m
- Side rail height: 100 mm
- Available cabling space: 69 mm
- Supplied as standard in 3 m lengths
- Finishes:
 - G (hot dip galvanised)
 - D (deep galvanised)
 - S (stainless steel)

SAPPHIRE - HEAVY DUTY

- Generally suitable for spans up to 3.5 m
- Side rail height: 125 mm
- Available cabling space: 94 mm
- Supplied as standard in 3 m lengths (lengths up to 6 m available on request)
- Finishes:
 - G (hot dip galvanised)
 - D (deep galvanised)
 - S (stainless steel)
 - E (powder coated)

EMERALD - EXTRA HEAVY DUTY

- Generally suitable for spans up to 4 m
- Side rail height: 150 mm
- Available cabling space: 119 mm
- Supplied as standard in 3 m lengths (lengths up to 6 m available on request)
- Finishes:
 - G (hot dip galvanised)
 - D (deep galvanised)
 - S (stainless steel)

STEEL PERIMETER TRUNKING. FLEXIBLE, FAST FIT & SAFE.

1 STEEL BLACK BOXES

2 RANGE OF
WIRING ACCESSORIES

3 UNIVERSAL SNAPPER CLIP

4 ROLLED EDGE

STEEL PERIMETER TRUNKING

SIMPLE,
RELIABLE
POWER
& DATA
DISTRIBUTION.

A stylish, screwless system that is quick & easy to install.

Being steel, Legrand's perimeter trunking is tough enough for high traffic environments such as schools, hospitals and laboratories and comes with a range of end user and installer benefits.

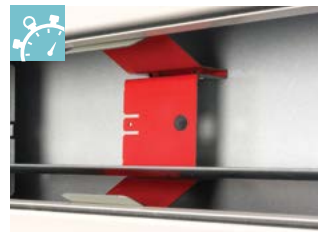
- Available in heights of 110, 130 and 170mm including a 170mm skirting option with offset opening.
- Screwless - no visible screws when installed.
- Earthing cams earth the system during assembly.
- Up to 4 compartments can be easily configured on site.
- Powder coating is low smoke zero halogen.



1 Steel back boxes are compatible with British Standard wiring accessories and improve EMC (electromagnetic compatibility).



2 A range of wiring accessories can be added to the trunking, including Legrand's Synergy and Arteor ranges.



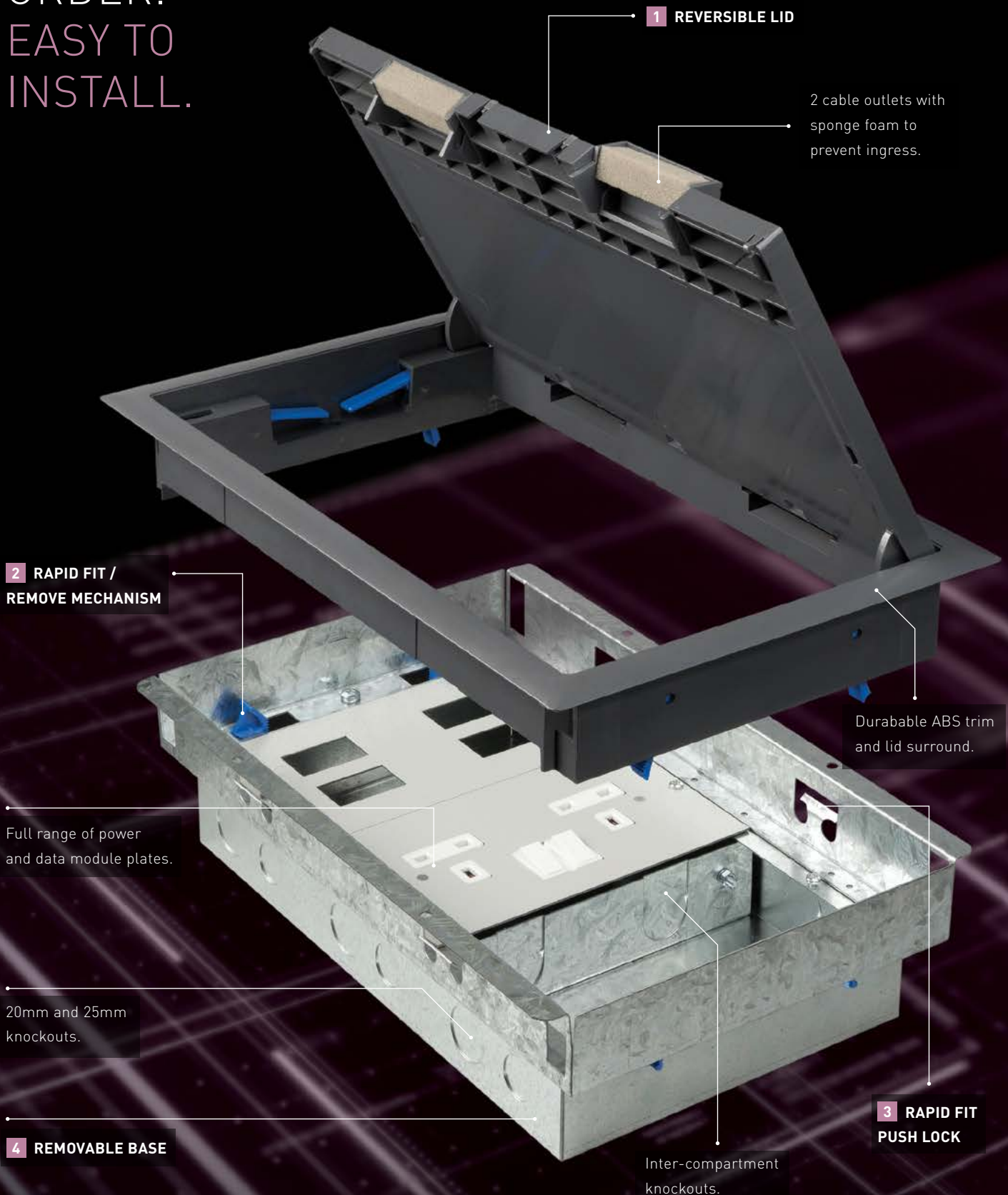
3 The universal snapper clip allows compartments to be configured on site and the steel divider improves EMC.



4 The rolled edge on the trunking opening and divider reduces the risk of injury or damage to cables when installing the trunking.



EASY TO
ORDER.
EASY TO
INSTALL.



CAVITY FLOOR BOXES

THE MODULAR APPROACH

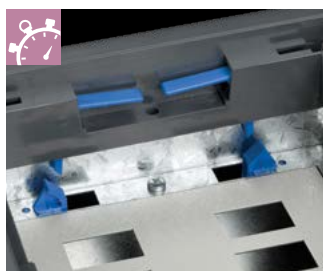
COMPONENTS
ARE SOLD SEPARATELY
TO ACCOMMODATE ANY
CONFIGURATION.

Available in 1, 2, 3 and 4 compartments and three depths - the range has been developed with a host of special features:

- Rapid fit and remove mechanism.
- Reversible lid.
- Push-fit detail to secure base in the floor.
- 1 compartment floor box is designed to easily accommodate moulded plugs.



1 Lid and trim can be easily removed to reverse orientation.



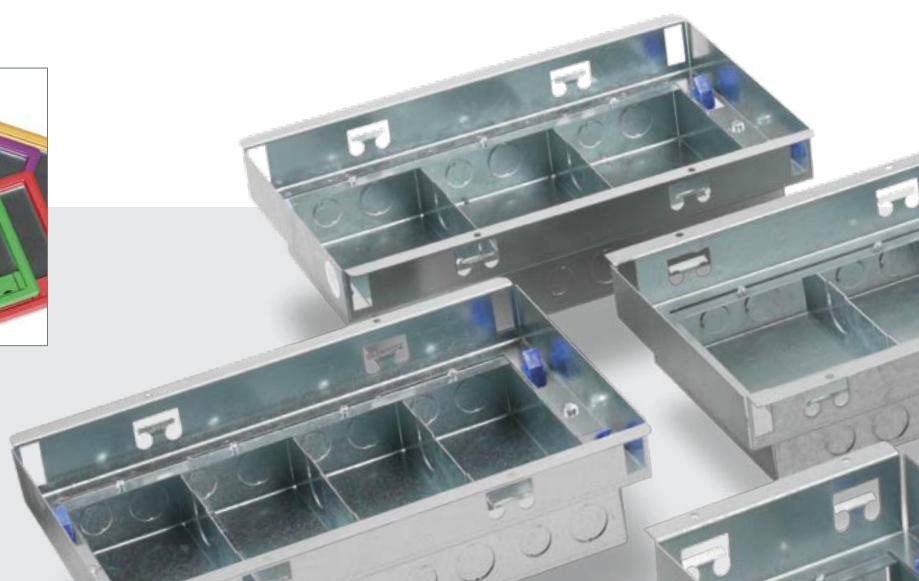
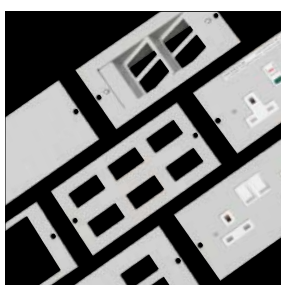
2 Rapid fit / remove mechanism adjusts for flooring thickness.



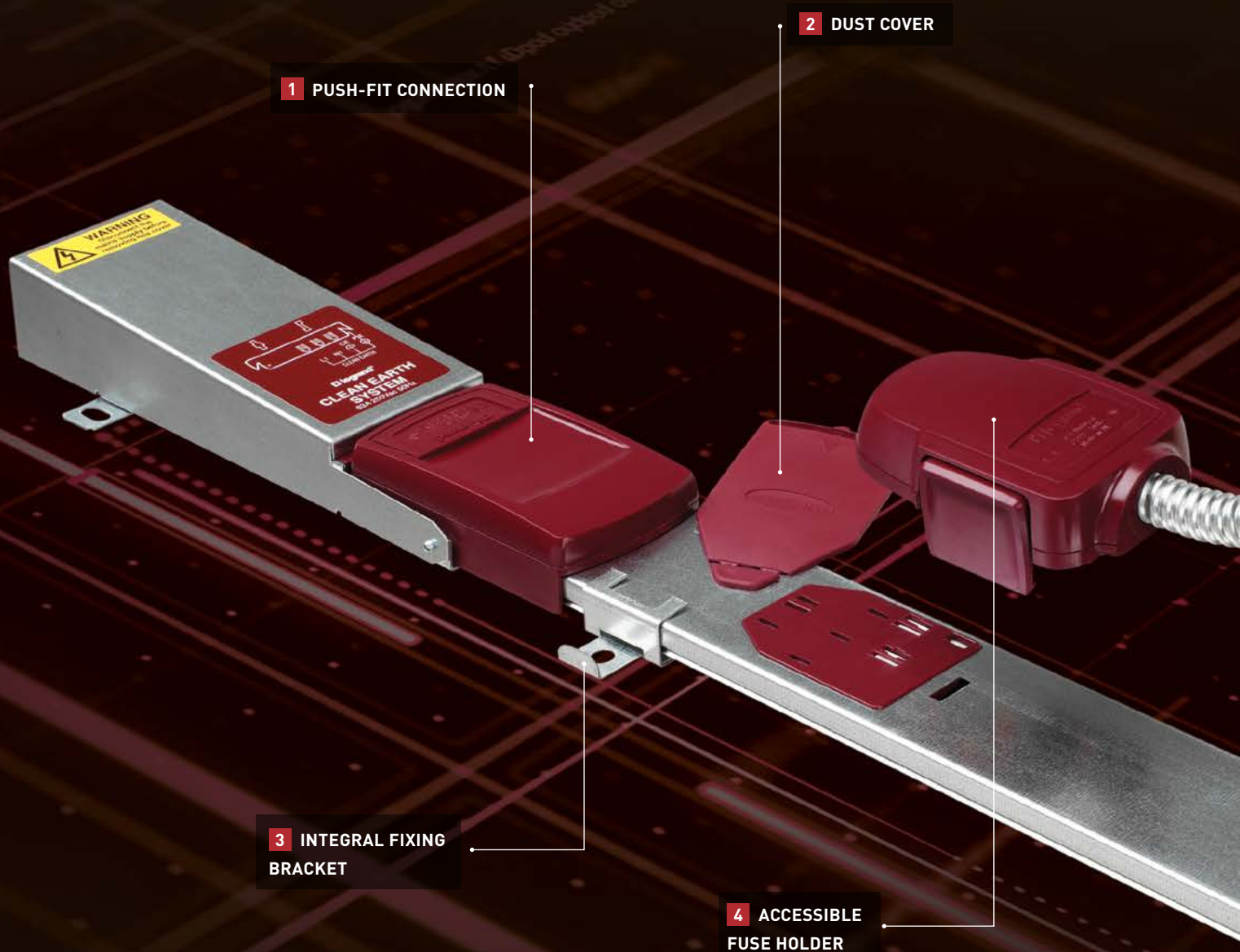
3 Rapid fit push lock secures base in floor aperture.



4 Removable base for easy wiring.



INNOVATIVE DESIGNS FOR UNDERFLOOR POWER.



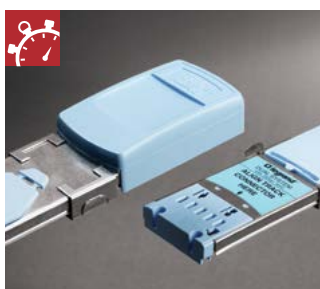
POWERTRACK

THE POWER TO DELIVER

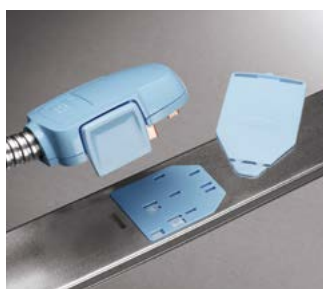
RELIABLE,
FLEXIBLE
WORKSPACE
POWER.

63A compact busbar in standard, clean earth and dual circuit.

Reliable, push-fit connections make the system easy to install and reconfigure and, when used with a Soluflex cavity floor system (page 22-23), it creates a flexible cable management system that can adapt to changing requirements.



1 Push-fit keyed connections for fast and correct installation.



2 Plastic retained dust covers protect connection when tap-off outlet is not in use.



3 Integral fixing brackets secure track runs to the floor.



4 Accessible fuse holder for an easy fuse change.

PRODUCT RANGES



STANDARD

Two bar and earth system.



CLEAN EARTH

Three bar and earth system including an independent clean earth copper bar.



DUAL CIRCUIT

Five bar and earth system incorporating both standard and clean earth systems within one enclosure.

YOU DON'T
HAVE TO BE
A FLOORING
EXPERT
TO INSTALL
SOLUFLEX.

TILES

- 225 X 225 mm pre-galvanised steel
- Clip into place and easily reconfigured
- Earthing cams provide earth continuity with next tile
- Dedicated floor box tiles available

PEDESTALS

- Fixed height (from 37 mm to 150 mm)
- No adjustment required
- No need for glue or screws

SOLUFLEX[®]

INNOVATIVE CABLE MANAGEMENT FLOORING

QUICK &
SIMPLE TO
INSTALL WITH
NO NEED FOR
GLUE OR
FIXINGS.

Much more than just a raised floor

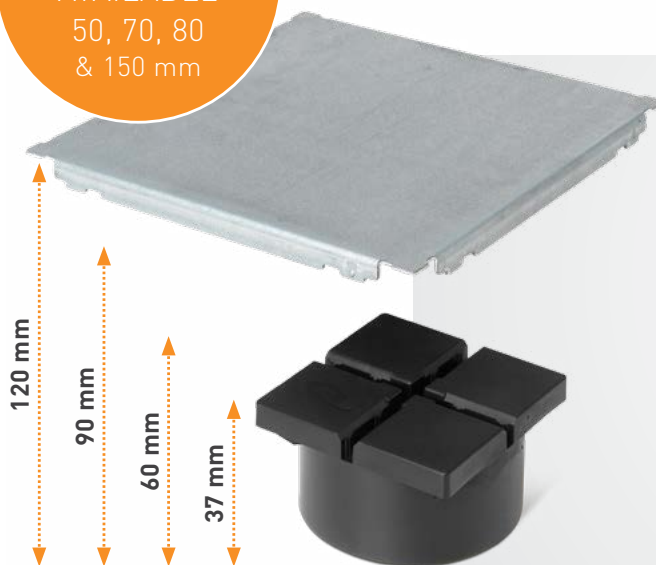
This innovative system integrates low-level flooring with Legrand's powertrack, cavity floor boxes and Cablofil steel wire cable tray. It allows runs of power, data and communication to be structured in a logical, ready to use layout that remains hidden to end users. Soluflex is ideal for both renovation and new build projects.



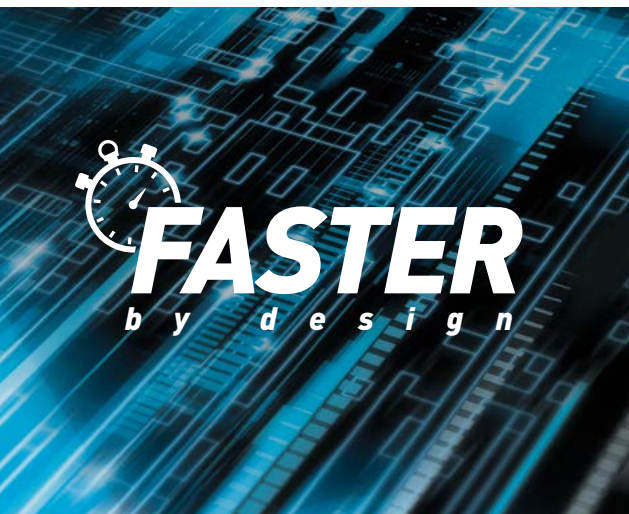
- No need for glue or screws.
- Tiles simply clip into place and the layout can easily be reconfigured.
- Materials are both recycled and recyclable.
- Earthing cams on each tile provide earth continuity with the next tile.
- Tiles, carpet, stone or wood can be laid on top of a finished installation.

NEW
SIZES ALSO
AVAILABLE
50, 70, 80
& 150 mm

Contact us on: +44 (0) 370 608 9020



TRIED AND TESTED WHAT OUR CUSTOMERS SAY...



When comparing Legrand to other manufacturers on the market, especially where labour costs are concerned, we are consistently impressed with the attention to detail in the products. As margins are increasingly harder to manage within the industry it is this detail that aids a company like ourselves to gain an advantage. We recently used Swiftclip for the Swifts cable tray system - it saves on installation time and helps the installer by cutting the amount of component parts that need to be carried around site. On a large site the cost savings are immeasurable.

Richard Mills, Director - Monarch Electrical

Salamandre IP4X trunking is an excellent, well made and well designed product. The snap on lid makes installation so simple, as do the accessories - which practically fit themselves!

Gerard Duffy, Managing Director - Enterprise Electrical

We selected Legrand products for installation on a Design and Build project. The installation was a high level warehouse and it was important to us that the operatives were working effectively. Whilst installing the Swifts cable tray systems, we considered the Swiftclip indispensable.

Luke Royce, Contracts Manager - W. Portsmouth & Co. Ltd

We recently used Salamandre trunking and Swifts cable tray on the Symantec project. We found these ranges to be of high quality and easy to install. Salamandre trunking's pre-fitted couplers saved a lot of time as there are fewer components and all that is required to join it together is a screwdriver. Fitting lengths of Swifts cable tray with Swiftclip meant there was no need to use any tools, as the clips can be installed by hand.

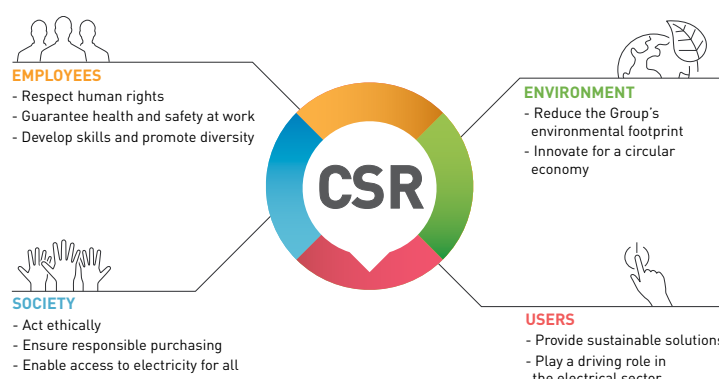
Philip Holland, Electrical Supervisor - Mercury Engineering



LEGRAND GROUP CORPORATE SOCIAL RESPONSIBILITY

CSR strategy

Legrand's CSR strategy is located at the intersection between the Group's business, its strategy, and the global challenges it faces. These are the challenges that guide its development every day. CSR is therefore totally integrated into Legrand's business. It involves the whole organisation: every subsidiary and entity of the Group, being a stakeholder in this CSR strategy, assists with its implementation.



Find out more: www.legrand.co.uk

Design & innovation for a circular economy

Protecting the environment involves promoting the principles of a circular economy. This means innovating to build a virtuous ecosystem based on better use of natural resources (in connection with the Group's eco-design initiative) and more complete recycling of waste, both for the purposes of Legrand's manufacturing activity and for the electrical sector, in particular by setting up systems to process products at their end of life.



REDUCING THE GROUP'S ENVIRONMENTAL FOOTPRINT

Legrand's environmental policy is a continuous improvement initiative that has been deployed at the Group's sites through ISO 14001:2004 certification. This includes all sites within the UK.

INFORMING CUSTOMERS OF THE ENVIRONMENTAL IMPACT OF PRODUCTS

Reducing the environmental impact of buildings requires careful design choices. Product environmental information, in accordance with ISO 14025, specifically informs users of the environmental impact of the electrical products they use.

The 'EcoPassport' certified Product Environmental Profiles (PEPs) are a reference tool for information on the environmental impact of electrical products. They are based on an international benchmark standard, ISO 14025 – Environmental labels and declarations – Type III environmental declarations and use life cycle analysis (LCA) techniques which can be used to provide real-world data. This is done using EIME (Environmental Improvement Made Easy) calculation software, based on the ISO 14040 Standard series – Environmental management – Life cycle assessment – Principles and framework.



PEPs can be downloaded from our website: www.legrand.co.uk

Contact details

United Kingdom

Great King Street North,
Birmingham, B19 2LF

Customer Services:

Tel: +44 (0) 345 605 4333 Fax: +44 (0) 345 605 4334
E-mail: legrand.sales@legrand.co.uk

Quotations and Technical Support:

Tel: +44 (0) 370 608 9020 Fax: +44 (0) 345 605 5334
E-mail: uk-cmsales@legrand.co.uk

Republic of Ireland:

Tel: 01 295 9673 Fax: 01 295 4671
E-mail: legrand.sales@legrand.co.uk



**FOLLOW
US AT**

@ www.legrand.co.uk
www.legrand.ie

YouTube www.youtube.com/legrandtvuk

voitimum www.voltimum.co.uk
www.voltimum.ie



Head office (UK and Ireland):

Legrand Electric Limited
Great King Street North, Birmingham, B19 2LF
Tel: +44 (0) 370 608 9000 Fax: +44 (0) 370 608 9004
Website: www.legrand.co.uk

In accordance with its policy of continuous improvement, the Company reserves the right to change specifications and designs without notice. All illustrations, descriptions, dimensions and weights in this catalogue are for guidance and cannot be held binding on the Company. All contents and design presentation included in this publication are © Legrand Electric Limited. All rights reserved. 2016



This document is printed on sustainably sourced paper. Please recycle.

The Legrand logo is a registered trademark of the Legrand group of companies.